



**CAPTAINS GROUP**

king of quality



## FROM CEO'S DESK

CAPTAINS GROUP, founded in 2007 is a leading group of companies providing a contribution to Agro Products, Heavy Industrial Machinery, Material Handling Equipments, Power & Energy, Construction, Prefabricated Steel Structure, LPG/CNG sector in Bangladesh with the full satisfaction of related concern. The company's motto is "KING OF QUALITY" to the concerned industry at all times. CAPTAINS GROUP, remains determined to achieving leadership in the fields that we enter into and be known as a premier business group committed to grow with changing face of time.

Our philosophy is—to attain and establish market leadership by bringing in products that meet real customer needs & self-reliance and to create an organizational culture based on trust, team effort, innovation and creativity.

We have faith in our mission, values, ethics and very hard work to attain higher productivity, diversification and growth in areas beneficial to all and our motto is self-reliance for the Company, Community and Country.

CAPTAINS GROUP has always maintained its goodwill, which has allowed the company to grow its corporate client base and excel in other business activities. As a corporate market leader, the group has a robust presence in the market by employing the very best in the trade.

CAPTAINS GROUP believes in a professionally managed, responsive organization supported by an experienced team of qualified finance, marketing and technical executives.

### **M K Biswas Swapnil**

MEngg, MSc, DBA  
CEO

# SUMMARY

## **EPC MILLING MACHINERY**

---

Auto Rice Mill (Turn-key Solution), Auto Flour Mills (Turn-key Solution), Auto Feed Mills (Turn-key Solution) Dal/Lentils Mills (Turn-key Solution), Maize Mills (Turn-key Solution), Storage Silo (Turn-key Solution), Oil Refinery Mills (Turn-key Solution), Biscuit Factory (Turn-key Solution), Auto Bricks Plant (Turn-key Solution) Cold Storage, Ship Unloader, Tiles & Ceramic Industry, WTP/ETP.

## **HEAVY MACHINERY & EQUIPMENT**

---

Forklift, Excavator, Truck Crane, Dump Truck / Truck Mixers, Concrete Pump, Bulldozers, Road Roller Trailer, Dredger

## **POWER & ENERGY**

---

Big Capacity Generator, Power Plant Project, Diesel & Gas Generator, Auto Gas Station, LPG Dispenser Complete LPG Cylinder Production Line, LP Gas, LP Gas Bulk Storage Tank, Bobtail Tank LPG Satellite Plant, Etc.

## **PRE FABRICATED STEEL STRUCTURE**

---

Residential Building, Industrial Building / Factory Shed , Warehouse, Duplex Building, Foot Over Bridge Building Connection Bridge, Building Extended Canopy, Aircraft Hangar, Bailey Bridge.

# EPC MILLING MACHINERY



# EPC MILLING MACHINERY

## TURN-KEY SOLUTION

Market Leadership Powered by CAPTAINS GROUP.

CAPTAINS GROUP EPC Milling Machinery sector is the largest and strongest in Bangladesh. The sector are dominated by small, medium and large sized companies that provide customized products and small series to meet the strong demand of domestic manufacturing industries. It's strength comes from its long and unwavering tradition, leading position in technological development, diversified industrial base, and the Government's robust support for the industry.

This position is further strengthened by the staggering growth and dominance of our industrial machinery / automation sector and the clear focus to establish CAPTAINS GROUP as a lead provider and market for cyber physical systems and advanced manufacturing solutions. Take a look at these numbers and find out why CAPTAINS GROUP stands for the highest-quality goods in the world.

## OUR SOLUTIONS

**Auto Rice Mill Turn-key Solution**  
**Auto Flour Mills Turn-key Solution**  
**Auto Feed Mills Turn-key Solution**  
**Dal/Lentils Mills Turn-key Solution**  
**Maize Mills Turn-key Solution**

**Storage Silo Turn-key Solution**  
**Oil Refinery Mills Turn-key Solution**  
**Biscuit Factory Turn-key Solution**  
**Auto Bricks Plant Turn-key Solution**  
**Cold Storage & Ship Unloader**



## **AUTO RICE MILL TURN-KEY SOLUTION**

CAPTAINS GROUP is a professional Grain processing equipment trading enterprise in Bangladesh, the main products are rice processing equipment including: the raw grain cleaning machine, destone machine, paddy husker, paddy separating machine, horizontal rice milling machine, vertical rice milling machine . The grinding mill can also be combined with a variety of other devices such as the rice sorting machine, rice polishing machine, bucket elevator, and power distribution cabinets. For, both of Parboiled & Non-parboiled milling.

**CAPACITY**  
16 Ton Per Day  
300 Ton Per Day

# DRYER PARBOILING PLANT



Based in Dhaka (Bangladesh), CAPTAINS GROUP has established its position as renowned Manufacturer, Service Provider and Supplier of Complete turn key rice mill projects form PEB building to complete machinery.

We use quality tested raw material to fabricate our unmatched range of products. The Heat Exchangers, boilers and other products offered by us have various quality features such as full safety, easy installation, compact exterior, convenient maintenance & cleaning, high durability etc.

Furthermore, we have a team of highly experienced engineers who strive to design our products like Rice Mill Elevator, Rice Mill Bucket Elevator, etc, as per specifications given by our valued customers. The manufacturing unit, we have, is fully equipped with advanced machinery and tools that help to acquire high level of customers' satisfaction.

## PRODUCT RANGE

- Parboil & Dryer Unit
- Heat Exchanger
- Blower
- Fluidized Bed Dryer & Cooler
- Bucket Elevator

- Boiler
- PEB Structures (PPGI/PPGL, Stainless Steel Trapezoidal & Tile Profile Sheets)
- Turnkey Projects



**AUTO FLOUR MILLS  
TURN-KEY SOLUTION**





## AUTO FLOUR MILLS TURN-KEY SOLUTION

Over the years, CAPTAINS GROUP has been maintaining an extraordinary culture of service, innovation, and teamwork. This has brought us what we are today, attaining a wide range of customers throughout the country and surpassing the global market.

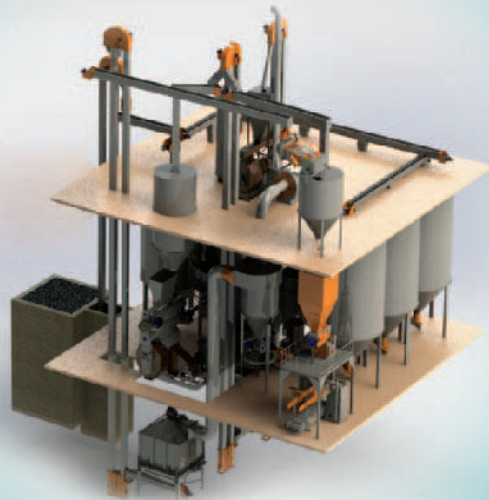
When it comes to delivering skyscraping services, we hold no barriers. We provide innovative machines and accessories that are hard to reach. Along with that, we always come up with result-oriented services that are generated by “outside the box” thinking.

Almost any flour mill plant manufacturer will be satisfied with our process-centric approach. Our implementation process is systematic and will be maintained with web-enabled technology if necessary. On top of that, you will be getting the best commercial automatic flour mill machine prices in Bangladesh.

### **CAPACITY**

50 Ton Per Day - 1500 Ton Per Day



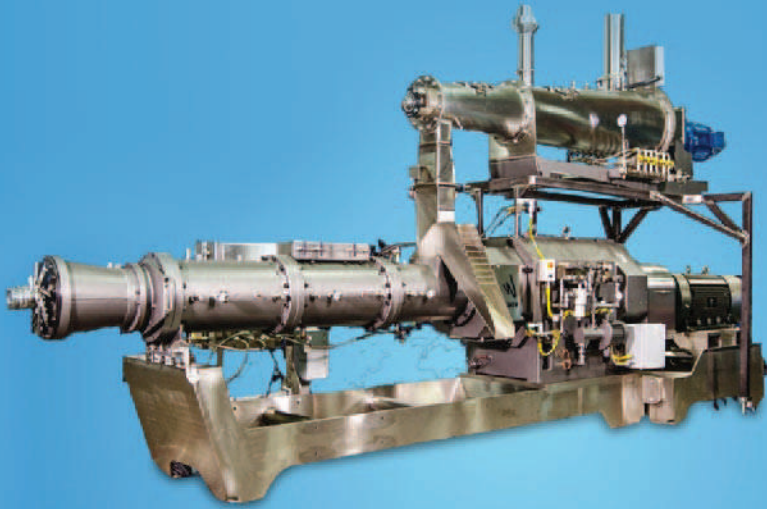


## AUTO FEED MILLS TURN-KEY SOLUTION

CAPTAINS GROUP is glad that designing, installing, and supplying equipment and machinery for feed mills is a part of its many services. CAPTAINS GROUP is here to help valued customers in Bangladesh who want to plan, design, build and maintain all types of feed machinery systems.

Generally, there are three types of feed distribution required for building a complete feed plant. These are - Fish, Poultry, and Cattle feed. Again, there are individual feed plants like the Poultry Feed Processing Plant, Fish Feed Processing plant, and Cattle feed Processing plant. No matter which type of feed plant you want to build, we know the creek and corners for the right setup.

CAPTAINS GROUP has been a successful distributor of machinery for grain mills. We have prolonged experience in this sector, distributing equipment in 30 districts throughout the country. And we want to share the same expertise in providing all kinds of feed plant machinery. That's not all, we take special orders on making and delivering specific machines as per customers requests.



CAPTAINS GROUP offers ready-made machines and equipment for poultry, livestock, aquaculture such as chicken, cattle, fish etc. We can arrange to set up various kinds of feed mill machines depending on the type of your feed mill And you will get your desired feed plant machinery at reasonable prices.

Whether you want to initiate a poultry feed mill, fish feed mill, or cattle feed mill;

CAPTAINS GROUP got you covered And we are confident in our services regardless of the size of your plant. According to the size, there can be various types of feed plants like Mobile Pellet Plant, Mash Pellet Plant and Mash Feed Plant. We can deal with delivering any type of machines for all of these plants.

CAPTAINS GROUP is the grocery of all kinds of feed mill equipment. We deliver, install and configure the primary equipment like hammer mill, feed mixer, pellet cooler, ring die pellet mill, pellet packing machine and so on. Aside from these, we can manage auxiliary equipment for a feed mill plant like feed extruder, pellet crumbler, grease adding machines etc. We believe our feed mill plant machinery services are exclusive for :-

- Fish Feed Processing Plant
- Poultry Feed Processing Plant
- Cattle Feed Processing Plant
- Mini Feed Processing Plant

## CAPACITY

2 Ton Per Hour/30 Ton  
Per Hour



## DAL/LENTILS PROCESSING PLANT TURN-KEY SOLUTION

In Bangladesh, dal milling is a profitable business. Depending on the production output, you can start this business at any size, Generally, the large-scale operation ensures more profitability, However, a mini dal mill is also a financially feasible business.

Different types of dals are the very important and essential food grains in india. Some of the most popular dals are Masoor, Green Moong, Mung, Tur, Chana, Rajma, Urad, Lobia, or black-eyed pea, Matar dal, Chickpea, etc.

The overall success and profitability of a dal mill depend on the regular supply of raw materials. So, if you live in a dal producing area where you can procure raw dal easily, you can start this business.





## MAIZE MILLS TURN-KEY SOLUTION



The goal of CAPTAINS GROUP is to offer the ultimate commercial and industrial maize processing solution in not only Bangladesh but also overseas. In order to achieve that, we have been working hearts and souls to become the best machinery supplier for maize milling plants.

Anyone with the intention of building maize processing mills will be satisfied with our result-oriented approach. Our implementation process is systematic and will be maintained with web-enabled technology if necessary. On top of that, you will be getting the best commercial maize processing machinery prices in Bangladesh.

Unlike other maize processing machinery suppliers, we just don't deliver the machines, we ensure they are properly working. Along with that, we verify our customers are happy with state-of-the-art service and remarkable technical support.

**STORAGE SILO**  
**TURN-KEY SOLUTION**





## STORAGE SILO TURN-KEY SOLUTION

Service of Tailored Machinery for  
our custom built Silo's.

Silo is built by majestic quality hot-dip galvanized steel. The feed is entirely emptied by a vertical 08 angled bottom grasshopper and narrow sections up to the first level.

The Silo is comfortable making or extending to the desired shape and form employing screws from a 93 cm or 42 cm height wall material. Ample material force 1.5 – 3 mm causes the Silo to be quite strong. The roof is permanent and concluded by steel.

The bottom hatch mounted with bearings is stable to open and close. The Silo can be a part of the automatic feeding when the output hopper of an auger clearly installed under the bottom hatch. A native-made quality silo.

### Material:

Galvanized Steel, Stainless Steel

### Other Characteristics:

Smooth-Wall

### CAPACITY:

Max.: 15 m<sup>3</sup> (530 ft<sup>3</sup>)

Min.: 2 m<sup>3</sup> (71 ft<sup>3</sup>)



## BISCUIT FACTORY TURN-KEY SOLUTION

CAPTAINS GROUP is one of the leading machinery suppliers for biscuit/cookies factories in Bangladesh. We follow a customer-centric approach and innovative teamwork in terms of providing the best service for the biscuit/cookies factory implementation.

CAPTAINS GROUP has been a supplier of cost-effective machines for the biscuits and cookie industry in Bangladesh. As a supplier, installing and customizing machines and equipment have also become a part of our work. We are committed to providing the best biscuit/cookie-producing machines to our clients.

We initiate the implementation service of biscuit/cookie producing machines by visiting the site in real-time and study if there is an existing system on the spot. Once we have visited the site and completed our analysis, we start drawing the layout with load & cross-sectional details. CAPTAINS GROUP consists of a group of professionals to offer the best biscuit/cookies factory implementation service.





## FULLY AUTOMATIC BRICKS PRODUCTION PLANT

CAPTAINS GROUP deal with some good quality clay brick machine that is made of high quality international beam, which is thicker, bigger, longer and more stable than common steel material. With steel airbags, stability, improving automation; big base pressure, high productivity, good molding, this series clay brick making machine has good adaptability of raw materials such as coal gangue, shale, low plastic mud material, fly ash, construction muck, metallurgy and chemical industry waste and other solid waste.

The main products are double stage vacuum extruders, full automatic brick setting machines, hydraulic ferry traction pushers, hydraulic stepper, full automatic slitting cutters, crushers, mixers and more series of brick making production line. Our products have a good market both at home and abroad because of excellent quality and competitive price. Our products are highly trusted and applauded by customers. Welcome to enquiry



**CAPACITY**

20000/500000 pcs Per Day



## COLD STORAGE

CAPTAINS GROUP has long been an industrial leader in include turnkey design, manufacture, install, testing and commissioning of commercial and industrial refrigeration system i.e. cold stores, cold room, refrigerated warehouse, water chillers, process cooling, blast freezing, clean rooms, indoors snow, and etc. We provide made to measure solutions quickly and cost effectively to meet individual customer specifications and sized. Our experience and customized products have enabled us to serve various customers, ranging from large warehouses to leading quick service restaurants. Our goal at CAPTAINS GROUP is to provide the reliable product and prompt service to our customers. Since our founding, the company has concentrated on building a reputation for quality and reliability.

CAPTAINS GROUP is committed to provide highest quality, state of the art machinery, timely delivery schedule and prompt technical support in maintenance and commissioning cold room plant.

We are always ready to serve your ammonia or freon based refrigeration system for the purpose of :

- Potato Cold Storage
- Vegetable Cold Storage
- Fruit Cold Storage
- Dry chili cold rooms
- Fish / Meat cold storage
- Tomato cold storage
- Flower cold rooms
- Milk or Ice-cream cold rooms
- Juice cold room or any other purpose.



**CAPACITY**  
5 MT-50,000 MT



## OIL REFINERY MILLS TURN-KEY SOLUTION

CAPTAINS GROUP has been a supplier of oil refinery machines for the Oil and Fat industry in Bangladesh. As a supplier, installing and customizing machines and plans have also become a part of our work. We are committed to providing the best oil refinery machines to our clients.

While manufacturing and supplying products for oil plants, we obey the rules and regulations of international standards like ASME & CE. On top of that, our 10 years of industry-grade experience has made us capable of manufacturing projects that are specific to not only Bangladesh but also any country.

### We Are Inclusive off:

- Soybean Refinery Plant
- Mustard Seed Refiling Plant
- Palm Oil Refinery Plant
- Soybean Seed Refiling Plant



# TILES & CERAMIC INDUSTRY

# TILES & CERAMIC INDUSTRY



## WE OFFER FANTASTIC MACHINES FOR TILES AND CERAMICS.

Almost any tiles & ceramic manufacturer will be satisfied with our customer-centric approach. Our implementation process is systematic and will be maintained with web-enabled technology if necessary. On top of that, you will be getting the best commercial automatic machines for tiles and ceramics at affordable prices in Bangladesh.

When it comes to delivering skyscraping services, we hold no barriers. We provide innovative machines and accessories that are hard to reach. Along with that, we always come up with result-oriented services that are generated by “outside the box” thinking.

Over the years, CAPTAINS GROUP has been maintaining an extraordinary culture of service, innovation, and teamwork. This has brought us what we are today, attaining a wide range of customers throughout the country and surpassing the global market.

Phosfluorescently engage worldwide methodologies with web-enabled technology. Interactively coordinate proactive e-commerce via process-centric “outside the box” thinking. Completely pursue scalable customer service through sustainable potentialities.

Collaboratively administrate turnkey channels whereas virtual e-tailers. Objectively seize scalable metrics whereas proactive e-services. Seamlessly empower fully researched growth strategies and interoperable internal or organic sources. Credibly innovate granular internal or external sources whereas high standards in web-readiness. Energistically scale future-proof core competencies vis-a-vis impactful experiences.



# SHIP UNLOADER



# SHIP UNLOADER

**WE OFFER THE BEST SHIP UNLOADER  
IN SHIPPING INDUSTRY**

The Captain Groups produces elevated capability clamshell grasps for ship unloaders. The phrase "Ship Unloader" means a customary operation to unload bulk elements. It's also familiar as a rail-mounted clam shell that grabs bucket ship unloader. It may use in various cargoes without the need for an equipment change. And is capable of driving practically any dry bulk material. Also, it developed to dispose of bulk cargo from vessel to shore in the most systematic technique possible.

It stands in a berth created by CR Rail Port that includes a grab for unloading coal, iron ore, etc. Compared to tough clamshell grabs, shorter cycle times present higher unloading rates and upper efficiency. And the Gantry structure is the leading frame that fetches the static and dynamic loads to the floor. Apart from that, we can assemble many more structures at your door if you need.

For example, we can provide a maintenance crane, hopper assembly, spill plate, belt feeder, boom, trolley, main girder assembly, and many more. In addition, Captain Group offers a broad range of rated capacity from 200 tons/hour to over 3,000 tons/hour. But the accurate measure of its superior performance is it's via ship capacity.



# HEAVY MACHINERY & EQUIPMENT



# HEAVY MACHINERY & EQUIPMENT

Market Leadership Powered by CAPTAINS GROUP!

If you need to move it, store it or ship it—CAPTAINS GROUP has over 9 years of experience to help you get the job done. CAPTAINS GROUP carries a full line of CVS Ferrari / NETLIFT cranes, lift trucks and rough terrain forklift trucks; plus, CAPTAINS GROUP carry forklift batteries, chargers, and attachments. For those not in the market for a new forklift or who have a limited need, CAPTAINS GROUP has a nice selection of used and rental forklifts, and are available in LP, diesel, or electric. Our repair and service department is staffed with factory and in-house trained mechanics ready to get your equipment back on the job. CAPTAINS GROUP also offers planned maintenance programs and operator safety training seminars.

Our service van's stock a complete inventory of parts, provides an experienced service department, and performs field service and repair to keep you up and running.

## OUR PRODUCT LINES

- Forklift
- Excavator
- Truck Crane
- Backhoe Loader
- Bulldozers

- Dump Truck
- Truck Mixers
- Concrete Pump
- Road Roller
- Trailer



**NETLIFT**

## **FORKLIFT**

Forklift truck is now one of commonly used carrying vehicles, is into a pallet for loading and unloading, stacking and short distance transport various wheeled transport vehicles, belongs to the material handling machinery, widely used in railway stations, ports, airports, factories, warehouses and other various departments of national economy.

An extensive line of diesel forklifts of more than 20 models available from 1.5T to 16T from mechanical to hydraulic, from mechanical shift to electronic shift, both

European and Japanese engine optional. Diesel, LPG or Electric forklift is available.

CAPTAINS GROUP offers a one-year or 2000 hour warranty. The GP190-280DC Pneumatic Tire Rider's durability and reliability will meet and/or exceed your application requirements for heavy duty job tasks.





**MST**



## **EXCAVATOR & BACKHOE LOADER**

CAPTAINS GROUP Family Excavators provide you with more working advantages, whether you need more digging depth, more power, greater reach, more lift capacity, higher breakout force or more swing torque.

Every day someone finds a new use for an excavator. With so many applications, smart contractors want them excavators equipped for productivity. Producing that means the right excavator attachment for the job.



# TRUCK MIXERS





---

# TRUCK CRANE

---



---

# ROAD ROLLER

---



# POWER & ENERGY



# BIG CAPACITY GENERATOR

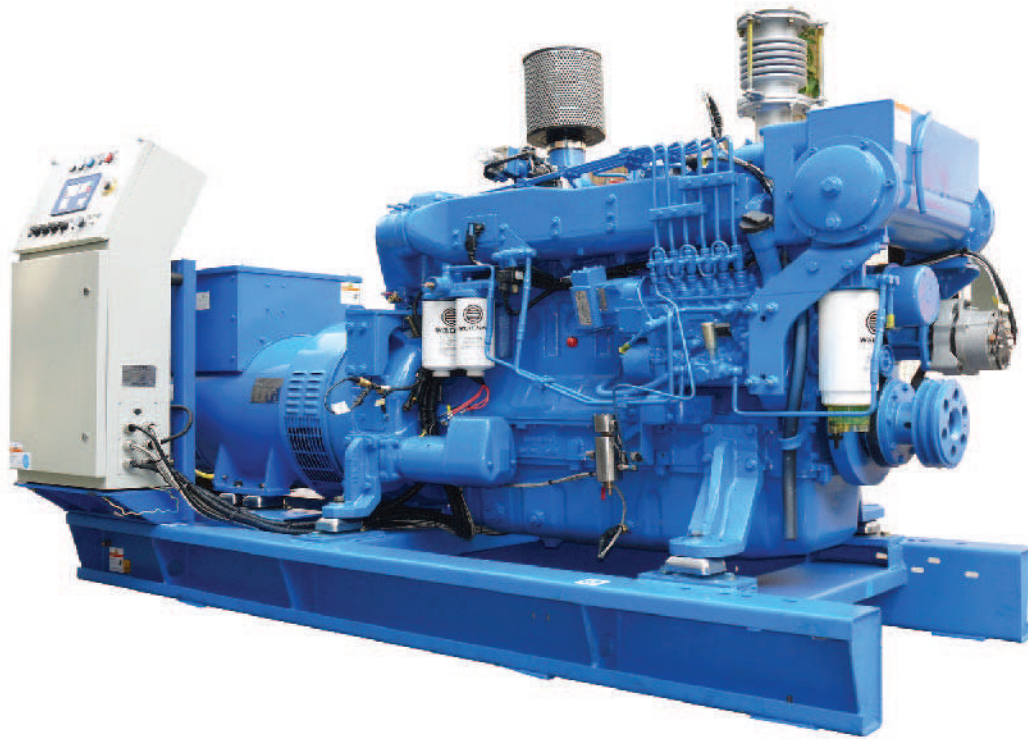




## POWER PLANT PROJECT

CAPTAINS GROUP consists engineering design and equipment supplier for power generation & provide turn-key solution for Power Plant Projects.

CAPTAINS GROUP supply and maintenance engine operated power stations services to electricity utilities, industry and local authorities. We provide solutions based on Oil, Gas, HFO, Dual Fuel reciprocating engines, and on biomass fuelled plants. Our competitive advantage is the plant's high efficiency coupled with operational flexibility in times of increasing or volatile fuel prices.



## DIESEL & GAS GENERATOR

CAPTAINS GROUP is a Bangladeshi company that has been successfully presented in the Diesel & Gas generator market since 2007, projecting and installing highly technological generating sets and power stations. With its the network currently present offers the most suitable solutions with a high standard of quality and technology in many areas and cities.

"CAPTAINS GROUP" gensets and power stations, ranging from 9.0 to 3.000 kVA (Diesel & Gas), are completed manufactured in the UK and offer the best technological and quality features.

Our industrial Diesel / Gas generator sets the Diesel / Gas engines of the famous brand are used: Perkins, Cummins, Yanmar, MWM, Deutz

Our Diesel & Gas generators are both in open, canopy or container type. Prime & Standby power.  
Always, ready stock.



## AUTO GAS STATION

A Part from industrial & domestic application, LPG is widely used as an alternative fuel for automotive. Our vast experience in Auto LPG turn-key project execution enables us to install Auto LPG Stations and LPG plants for industrial use in record time. With an efficient team along with the assistance of our authorized personnel, we are capable to commission Auto LPG Stations on bare plots within shortest possible time.

During design, supply, instillation, and integration of Auto LPG station, safety is our primary benchmark. Our installation design includes various safety measures such as emergency valves close to the point of use of the LPG and protective devices closer to the tank to prevent overpressure or excess flow of gas or liquid LPG into the pipe work system.

Periodic maintenance backed by our efficient service network ensures Auto LPG sites and LPG dispense operaties with minimum downtime.



## LPG GAS FILLING LINE

CAPTAINS GROUP provides Filling stations for LPG gas cylinders. The machines are manufactured in complex production. Cutting edge technology and precision manufacturing guarantee the estimated standard worldwide. Filling system is offered as a full automatic or semiautomatic. With the equipment up to 3000 bottles / hour can be filled.

### SYSTEM CONSISTS OF

- Conveyor line with rotational
- Conveyor line corner
- Conveyor line driving unit
- Check scale electronic automatic
- Leak detector electronic automatic
- Air compressor and components

- LPG gas pump
- Gas compressor
- LPG Pipe
- LPGE equipments
- Fire Pump
- LPG Tank





## LPG DISPENSER

Our LPG dispensers are among the most reliable and durable LPG dispensers in the market. Their modern design and advanced metering system should make them your first choice.

Different hydraulic system options :

CAPTAINS GROUP can offer you two different types of hydraulic systems for your dispenser : Hydraulic system with MT-100 positive displacement meters :

Our MT-100 is a volumetric type flow meter with pistons. It has been specifically redesigned from its Italian origins to measure the flow of LP Gas in the liquid phase, and may also be used for many other liquids. The design and materials used to assure good wear and corrosion resistance, accuracy in the measurement at any delivery speed, steadiness of calibration and low maintenance costs.

Hydraulic system with Coriolis mass flow meters :

Coriolis mass flow meters are specially designed for flow measurement of LPG for dispensing and truck unloading. It combines an integrated temperature measurement with intelligent conversion functions, providing temperature, mass, density or volume measurement or correction directly on dispenser.

**LP GAS BULK  
STORAGE TANK**





**BOBTAIL  
TANK**

# PRE FABRICATED STEEL STRUCTURE



# PRE FABRICATED STEEL STRUCTURE



Residential Building  
Industrial Building  
Factory Shad  
Warehouse  
Duplex Building

Foot Over Bridge  
Building Connection Bridge  
Bailey Bridge  
Air Craft Hanger  
Multi Storey Building



### **WHY DO YOU BUILD STEEL BUILDING?**

1. Improved Strength, More Strong , Durable and Versatile.
2. Environment-friendly, easy shift able and recyclable.
3. Reduce Materials and and Maintenance cost.
4. Time-saving.
5. Building Accuracy and Unlimited Architectural Possibilities.

### **WHY SHOULD YOU CHOOSE CAPTAINS GROUP?**

1. We offer quality products with reasonable price.
2. We have the qualified designing as well as a working team.
3. We always keep our commitment to achieve client's satisfaction.

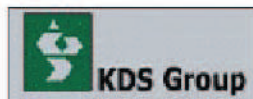
# SOME OF OUR MAJOR CLIENTS



THE HUNGER PROJECT



আমার দেশ  
হাসিনা আর কথা বলে





### CAPTAINS GROUP MISSION

To provide quality products and services in disciplines with special thrust on Agro Products, Heavy Industrial Machinery, Material Handling Equipments, Power & Energy, Medical & Healthcare, Prefabricated Steel Structure, LPG/CNG through a profitable and a growing organisation which exceeds aspirations of the stakeholders and contributes towards the country's economic development, the welfare of the society complying with health, safety and environment norms.

We aim to build an enterprise which facilitates growth for all our customers and employees, and all our countrymen in general.



#### CORPORATE OFFICE:

205/1, Tejgaon-Gulshan Link Road, Dhaka-1208, Bangladesh.  
Tel: +880 2 222296584, 222296581  
info@captainsgroup.com.bd, www.captainsgroup.com.bd

#### USA OFFICE:

87-34, 169 Street, Jamaica, NY 11432, USA. Tel: +13472644889

#### TURKEY OFFICE:

Ilkbahar Mah. Guneypark Sinpas Altinoran Tower 2/110 Cankaya/Ankara. Tel: +90 534 455 42 30